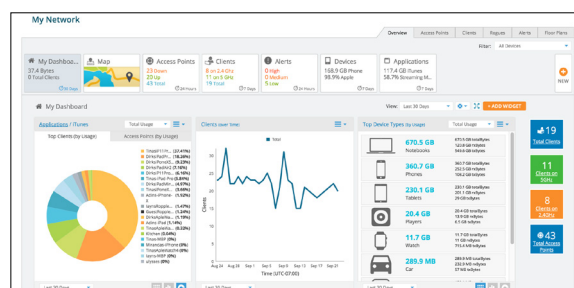


# XMS-Cloud Management System

## QUICK LOOK:

- Turn-key cloud-hosted management for Cambium Networks Wi-Fi 6 and Xirrus
- Complete application visibility and policy control of 2,000+ apps
- Single Sign-On (SSO) integration for user access with Microsoft Azure and Google G Suite
- Robust multi-level security for privacy and data protection
- Integrated EasyPass Access for Guest, BYOD and IoT



**XMS-Cloud** is a powerful management solution for deploying and managing Cambium Networks Wi-Fi and Switching portfolios with complete control and visibility. It provides zero-touch activation to automated software upgrades, patches, and licenses. IT enjoys the benefits of a superior console interface where all services are integrated at no extra cost. The system supports Wi-Fi devices, including IoT endpoints, regardless of operating system. DPI technology lets network administrators control up to 2,000 applications at the network's edge where they can be allowed, blocked, or throttled to achieve predictable performance, even under heavy network load.

As budgets diminish and time becomes a scarce commodity, cloud services bring affordability and efficiency to network management. XMS-Cloud is a powerful solution for deploying and managing your Wi-Fi network with complete control and visibility.

## XMS-Cloud Management System

### Key Benefits

#### MASSIVE SCALABILITY

XMS-Cloud accommodates current and future needs as Wi-Fi device use continues to grow and user habits change. Built on the same scalable, next-generation NoSQL database used by the largest internet companies, Cambium Networks' XMS-cloud supports multi-tenancy and networks using tens of thousands of access points (AP) and clients. Flexible SaaS scales to support peak usage scenarios.

#### SIMPLE USER AND DEVICE ACCESS

EasyPass makes the Wi-Fi connection experience virtually seamless for end users because it does not require users to download applications or install certificates. Employees with minimal technical knowledge can easily and securely connect personal devices to the corporate network using Microsoft, Google or simple IT-issued credentials.

#### HIGHLY RESILIENT

XMS-Cloud architecture is built with no centralized dependencies and no single-point-of-failure. This ensures system resiliency for mission-critical applications. XMS-Cloud offers complete data center redundancy and data replication for guaranteed service availability. Cloud platforms aren't failure points, even if the network goes down-APs act autonomously even if a cloud connection is lost, meaning security and traffic are processed directly at the network edge in each AP.

#### ROBUST SECURITY

Multi-level security is fundamental to XMS-cloud architecture to ensure privacy of data and protection from external exploits. Multi-tenancy isolates customer data, and encryption prevents visibility of communications between a customer site and the cloud. User data is kept separate from management data whereby only management data enters the cloud. XMS-Cloud was developed using the latest cutting-edge web technologies to ensure a future-ready platform able to meet the growing and ever-changing needs of enterprises, educational institutions, and service providers. Xirrus cloud technology includes TLS for robust security and firewall-friendly communications, bi-directional messaging protocols for nearly instantaneous changes and alerts, and a NoSQL distributed database to handle today's increasing performance demands.

#### TRACK GUEST ACTIVITIES

EasyPass Guest enables guests to self-register or use their social media credentials to connect. IT administrators gain full visibility into guest activities and the control to enforce access policies from anywhere via cloud management.

#### APPLICATION PRIORITIZATION

Cambium Application Control makes it easy to control data traffic at the network edge by identifying and enforcing policy against 2,000+ applications. It allows for granular control with Deep Packet Inspection (DPI). It provides for improved user experience with application prioritization and reduced security risk by blocking risky applications.

#### LOCATION SERVICES

The Xirrus Positioning System (XPS) empowers you by enabling contextual location data to deliver unique user experiences for thousands of visitors simultaneously ideal for retail shops, public malls, convention centers, sports arenas and more. XPS is the only solution that distributes intensive client location calculation across all APs in the network to achieve massive computational scale. XPS easily integrates with third party, industry-specific and other applications via a standards-based push/pull RESTful JSON API so businesses can interact with customers and deliver unique, value-added services. TLS security through the https protocol ensures secure transmission of location data.

## XMS-Cloud Management System

### Management System Details

**Deployment**

Cloud-Hosted Web Portal  
Managed Service Provider Accounts  
Multi-Tenant Provisioning  
Redundant Cloud Services

**Visualization**

Fully Customizable Dashboards  
Dashboard Filter by AP Group, Profile, SSID  
Supports Wi-Fi 6 and Xirrus Wi-Fi  
Geographical Maps for Site Location  
RF Coverage Heat Maps

**Monitoring**

Fully Customizable Dashboards  
20 Dashboard Widget Options  
Trending Views by Hour, Day, Week, Month  
Multi-Level Severity Alerting  
Email and SMS Alert Notification

**Onboarding and Provisioning**

Zero-Touch Provisioning  
Profile-based Configuration  
Assign Default Profile  
Automatic Bulk Software Update  
Schedule Software Updates

**Access Services**

Integrated EasyPass Access Services  
Customizable Guest Portals (Self Register or Ambassador)  
Social Login, Mobile Number Collection, Ad insertion  
One-Click and Voucher Portals  
Microsoft Azure and Google G Suite SSO Portals  
Onboarding Portal for BYOD and IoT  
Self Onboarding  
Personal Wi-Fi Portal

**Security**

Rogue AP Detection and Location  
AP Communications Over SSL  
No Inbound Internet Access  
Not-in-Traffic Path (GRE exception)  
Disaster Recovery

**Location Services**

Integrated Location with Floor Plans  
Client X-Y Location with Device Identification  
Rogue AP X-Y Location

**Analytics**

Dwell Time Over Time – 4 Ranges  
Number of Visitors Over Time – New, Recurring  
1 Year Data Retention

**Client Troubleshooting**

Client Health Score  
Client Health Statistics Over Time  
Client Application Usage  
Forensic View by Hour, Day, Week, Month

**Application Visibility**

2,000+ Applications by Category and App  
Top Clients by Application  
Top APs by Application

**Policy Control**

L2/3 Firewall  
L7 Application Control  
Air Cleaner Filter  
Policies by User Group, Device Type, SSID, Personal SSID, or Globally  
Time of Day

**Reporting**

Customized Report Generator  
Scheduled Email Reports  
Filter by AP Group, Profile, SSID  
1 Year Historical Data Retention  
RESTful Monitoring/Provisioning API  
Export UI Tables in CSV or PDF

**Administration**

Role-based Access  
Audit Trail  
Command Line History  
SSO through Azure, Google, and Generic SAML

## XMS-Cloud Management System

### Ordering Information

<b>XMSC-SUB-2R-1</b>	XMS-Cloud 1-year subscription: 2-radio AP with EasyPass Guest Self-Registration and Guest Ambassador modules and Cambium Care Advanced Support
<b>XMSC-SUB-2R-3</b>	XMS-Cloud 3-year subscription: 2-radio AP with EasyPass Guest Self-Registration and Guest Ambassador modules and Cambium Care Advanced Support
<b>XMSC-SUB-2R-5</b>	XMS-Cloud 5-year subscription: 2-radio AP with EasyPass Guest Self-Registration and Guest Ambassador modules and Cambium Care Advanced Support
<b>XMSC-SUB-4R-1</b>	XMS-Cloud 1-year subscription: 4-radio AP with EasyPass Guest Self-Registration and Guest Ambassador modules and Cambium Care Advanced Support
<b>XMSC-SUB-4R-3</b>	XMS-Cloud 3-year subscription: 4-radio AP with EasyPass Guest Self-Registration and Guest Ambassador modules
<b>XMSC-SUB-4R-5</b>	XMS-Cloud 5-year subscription: 4-radio AP with EasyPass Guest Self-Registration and Guest Ambassador modules and Cambium Care Advanced Support
<b>XMSC-EDU-SUB-2R-1</b>	XMS-Cloud 1-year subscription for Education: 2-radio AP with all EasyPass modules and Cambium Care Advanced Support
<b>XMSC-EDU-SUB-2R-3</b>	XMS-Cloud 3-year subscription for Education: 2-radio AP with all EasyPass modules and Cambium Care Advanced Support
<b>XMSC-EDU-SUB-2R-5</b>	XMS-Cloud 5-year subscription for Education: 2-radio AP with all EasyPass modules and Cambium Care Advanced Support
<b>XMSC-EDU-SUB-4R-1</b>	XMS-Cloud 1-year subscription for Education: 4-radio AP with all EasyPass modules and Cambium Care Advanced Support
<b>XMSC-EDU-SUB-4R-3</b>	XMS-Cloud 3-year subscription for Education: 4-radio AP with all EasyPass modules and Cambium Care Advanced Support
<b>XMSC-EDU-SUB-4R-5</b>	XMS-Cloud 5-year subscription for Education: 4-radio AP with all EasyPass modules and Cambium Care Advanced Support

## XMS-Cloud Management System

### Ordering Information

<b>EASY-SUB-2R-1</b>	EasyPass 1-year subscription for a 2-radio AP operating with XMS-Cloud or XMS-Enterprise
<b>EASY-SUB-2R-3</b>	EasyPass 3-year subscription for a 2-radio AP operating with XMS-Cloud or XMS-Enterprise
<b>EASY-SUB-2R-5</b>	EasyPass 5-year subscription for a 2-radio AP operating with XMS-Cloud or XMS-Enterprise
<b>EASY-SUB-4R-1</b>	EasyPass 1-year subscription for a 4-radio AP operating with XMS-Cloud or XMS-Enterprise
<b>EASY-SUB-4R-3</b>	EasyPass 3-year subscription for a 4-radio AP operating with XMS-Cloud or XMS-Enterprise
<b>EASY-SUB-4R-5</b>	EasyPass 5-year subscription for a 4-radio AP operating with XMS-Cloud or XMS-Enterprise



**GET STARTED at**  
[cloud.cambiumnetworks.com](https://cloud.cambiumnetworks.com)

### ABOUT CAMBIUM NETWORKS

Cambium Networks empowers millions of people with wireless connectivity worldwide. Its wireless portfolio is used by commercial and government network operators as well as broadband service providers to connect people, places and things. With a single network architecture spanning fixed wireless and Wi-Fi, Cambium Networks enables operators to achieve maximum performance with minimal spectrum. End-to-end cloud management transforms networks into dynamic environments that evolve to meet changing needs with minimal physical human intervention. Cambium Networks empowers a growing ecosystem of partners who design and deliver gigabit wireless solutions that just work.

[cambiumnetworks.com](https://cambiumnetworks.com)

02102022