

D

C

B

A

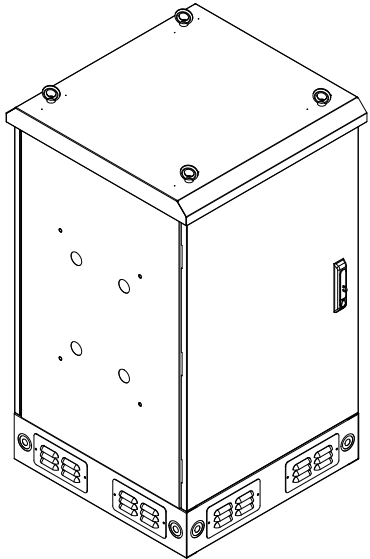
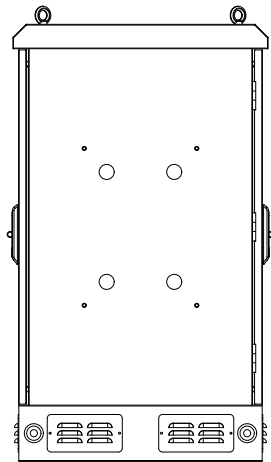
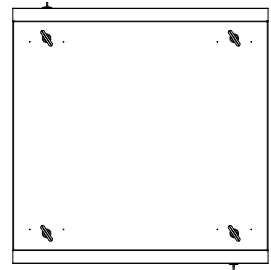
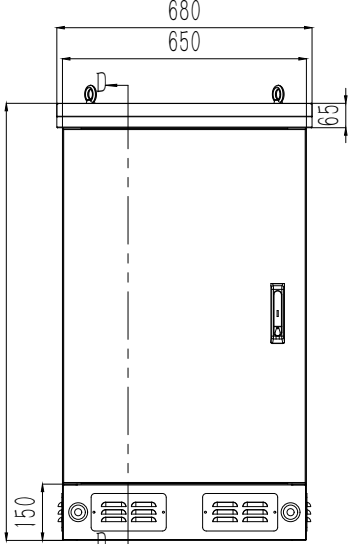
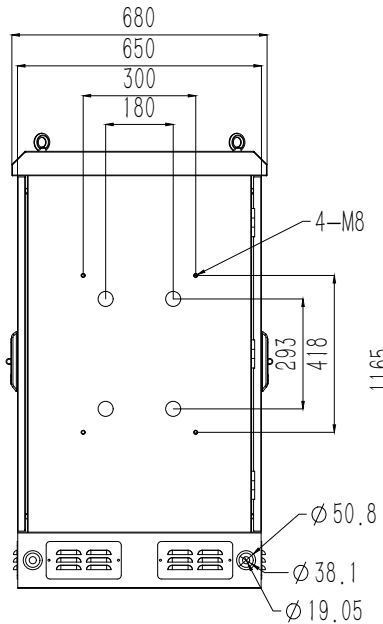
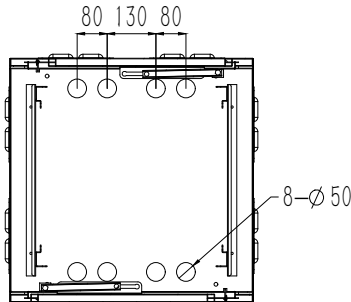
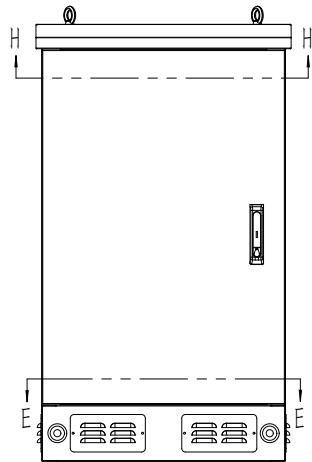
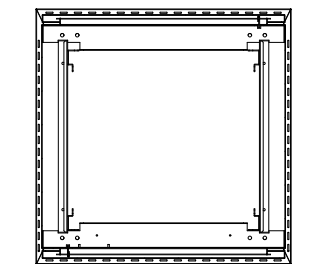
D

C

B

A

Description
18RU 650mm Wide x 650mm Deep OUTDOOR Cabinet , IP65 Rated| Grey , LightSaber Brand

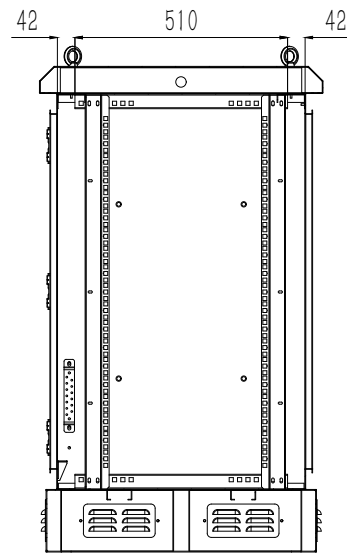
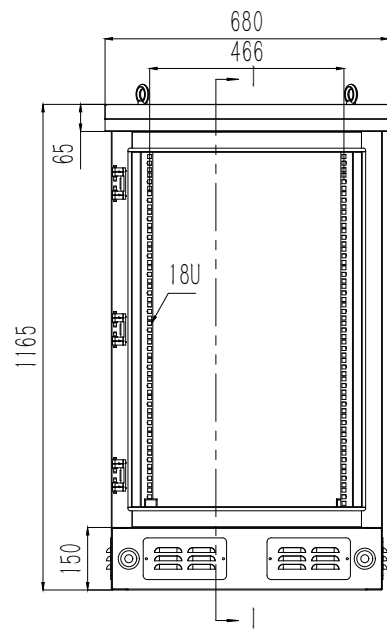
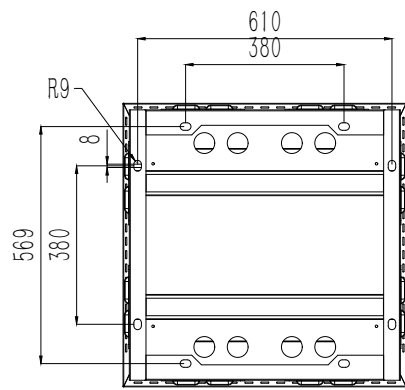


- NOTES:
- 1.INSTALLATION SHALL COMPLY WITH ALL APPLICABLE NATIONAL, STATE AND LOCAL ELECTRICAL REGULATIONS.
 - 2.REFER TO PRODUCT DOCUMENTATION FOR ADDITIONAL DETAILS PRIOR TO INSTALLATION AND SITE PREPARATION WORK.
 - 3.ALL DIMENSIONS ARE IN [INCH]MM.

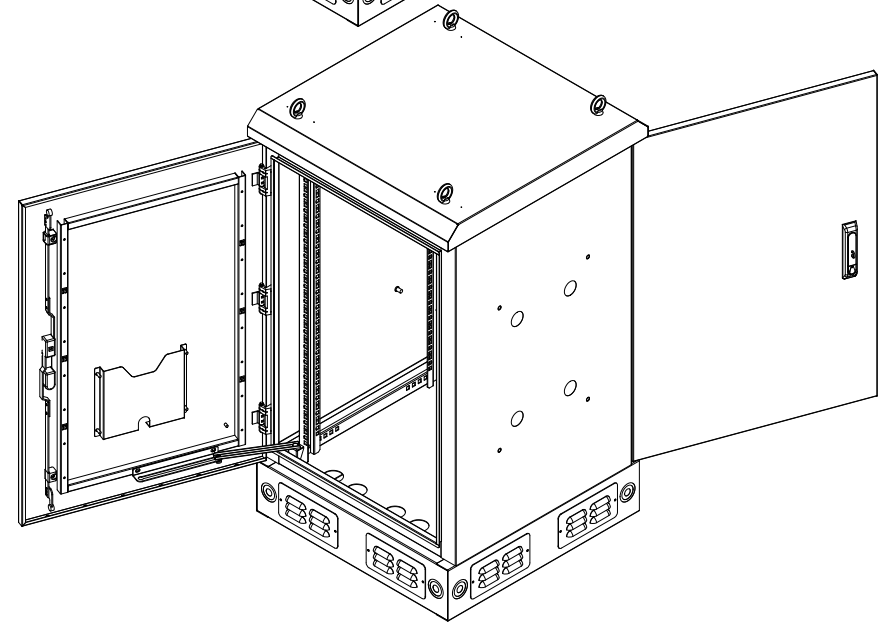
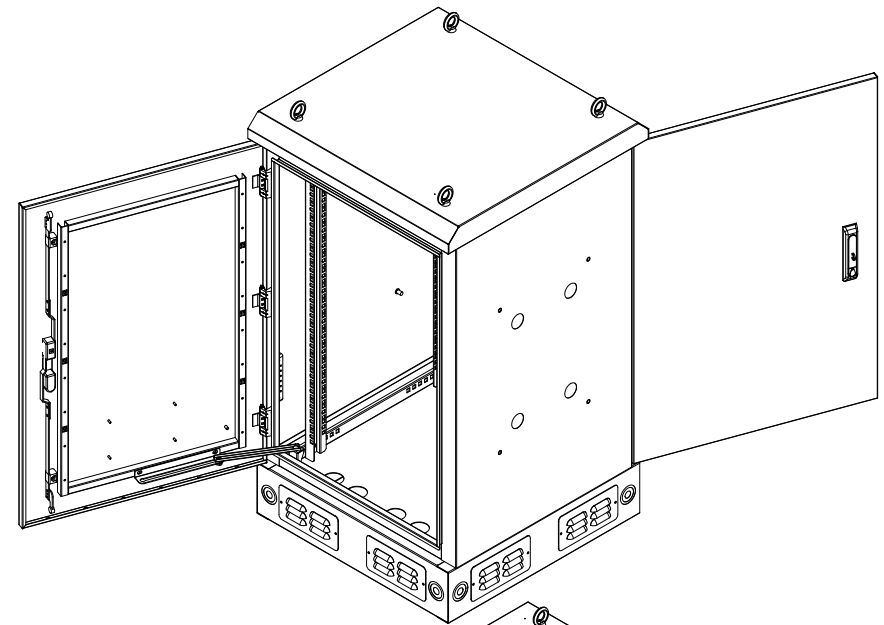
THIS DRAWING AND SPECIFICATIONS HEREIN ARE THE PROPERTY OF LightSaber AND SHALL NOT BE COPIED, REPRODUCED OR USED IN WHOLE OR IN PART, AS THE BASIS FOR THE MANUFACTURE OR SALE OF ITEMS WITHOUT WRITTEN PERMISSION FROM LightSaber. THIS DRAWING IS BASED UPON LATEST AVAILABLE INFORMATION AND IS SUBJECT TO CHANGE WITHOUT NOTICE.



TITLE: IP65 Outdoor Cabinet		DWG NO: LSO-18UOD-650650-IP65	REV. R0
PROJECT:		DRAWN BY: K.Z	2024-12-19
SHEET 1 OF 1		ENGINEER: P.W	2024-12-19
		APPROVED BY: T.C	2024-12-19



SECTION I-I



NOTES:

- 1.INSTALLATION SHALL COMPLY WITH ALL APPLICABLE NATIONAL, STATE AND LOCAL ELECTRICAL REGULATIONS.
- 2.REFER TO PRODUCT DOCUMENTATION FOR ADDITIONAL DETAILS PRIOR TO INSTALLATION AND SITE PREPARATION WORK.
- 3.ALL DIMENSIONS ARE IN [INCH]MM.

THIS DRAWING AND SPECIFICATIONS HEREIN ARE THE PROPERTY OF LightSaber AND SHALL NOT BE COPIED, REPRODUCED OR USED IN WHOLE OR IN PART, AS THE BASIS FOR THE MANUFACTURE OR SALE OF ITEMS WITHOUT WRITTEN PERMISSION FROM LightSaber. THIS DRAWING IS BASED UPON LATEST AVAILABLE INFORMATION AND IS SUBJECT TO CHANGE WITHOUT NOTICE.



TITLE: IP65 Outdoor Cabinet		DWG NO: LSO-18UOD-650650-IP65		REV. R0	
		DRAWN BY: K.Z			
		ENGINEER: P.W			
PROJECT:		SHEET 1 OF 1		APPROVED BY: T.C	2024-12-19