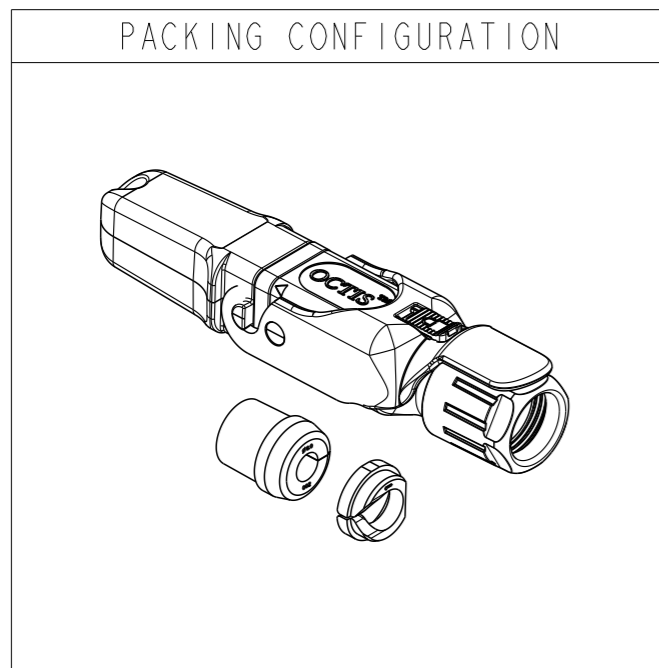
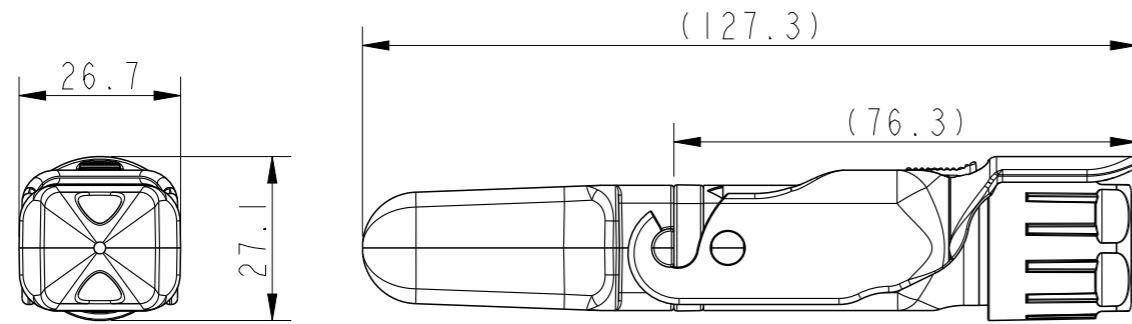
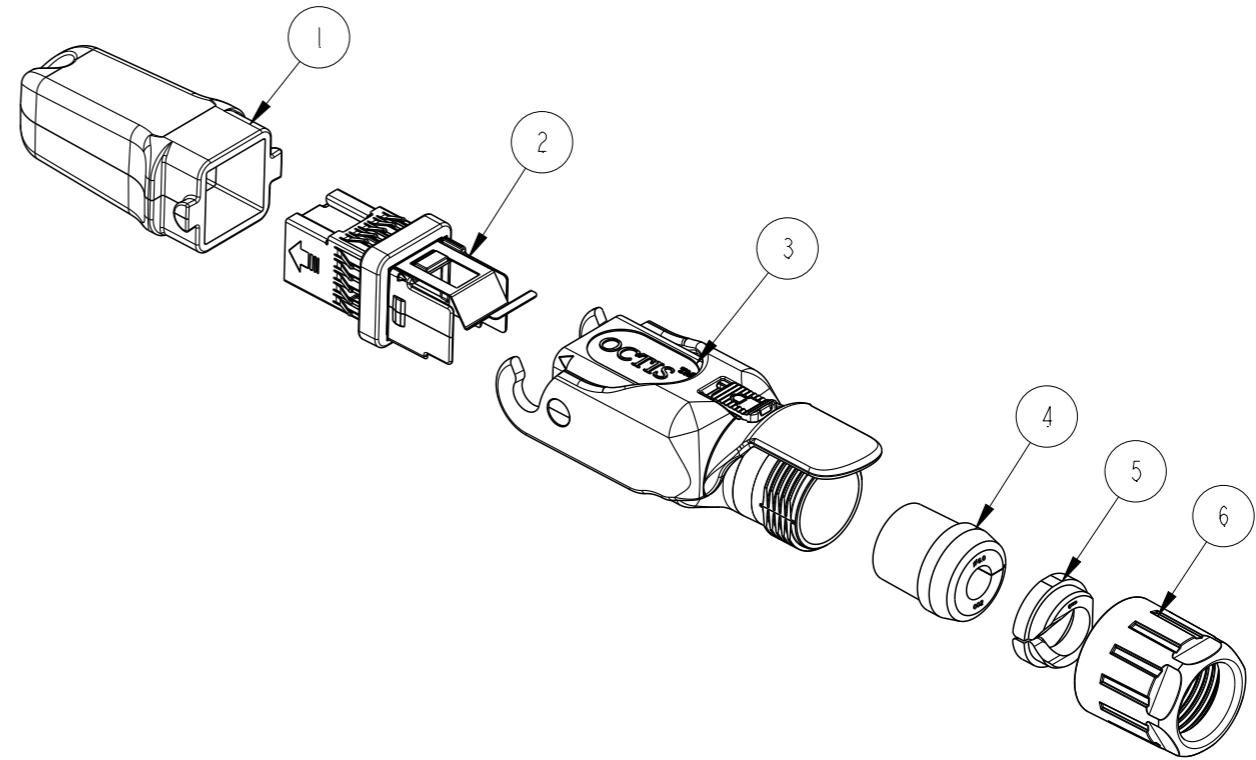


PART NUMBER	RUBBER GLAND
10135746-101LF	∅6
10135746-102LF	∅7 & ∅9
10135746-103LF	∅8

OCTIS SFP/SFP+ PLUG KIT-STANDARD LEVER,PITCH 26MM

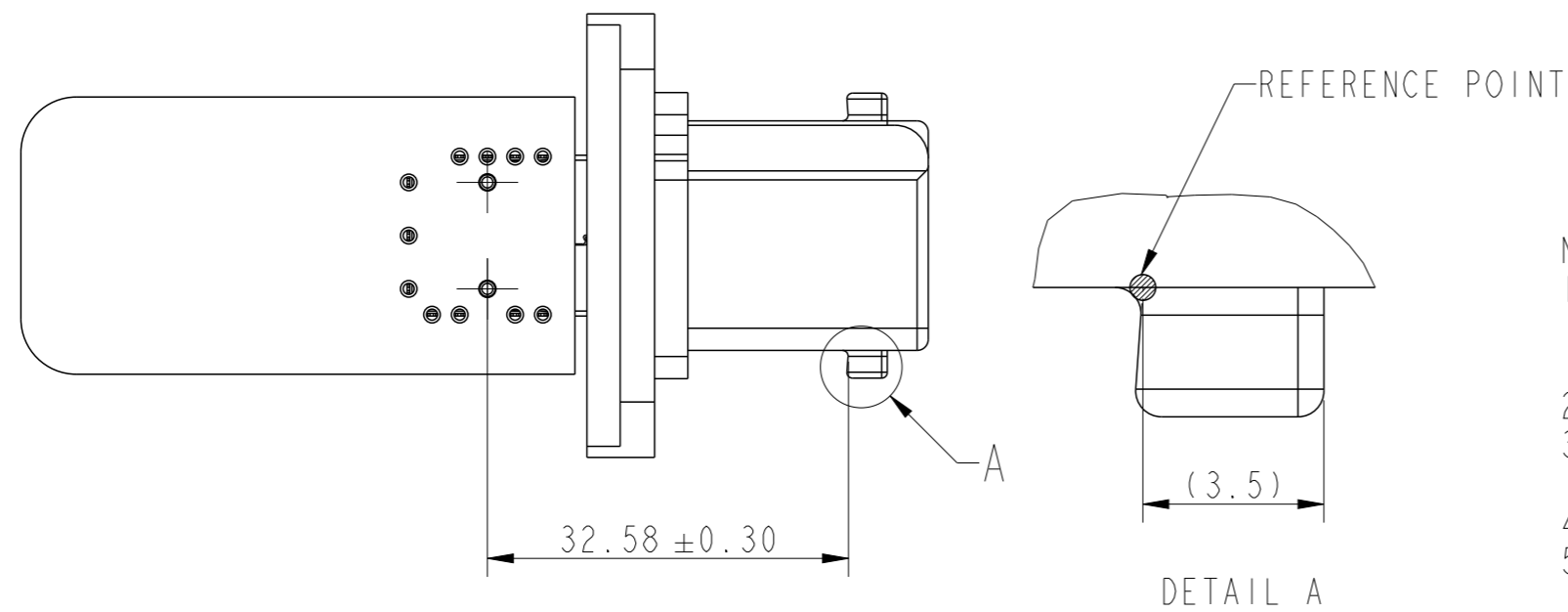
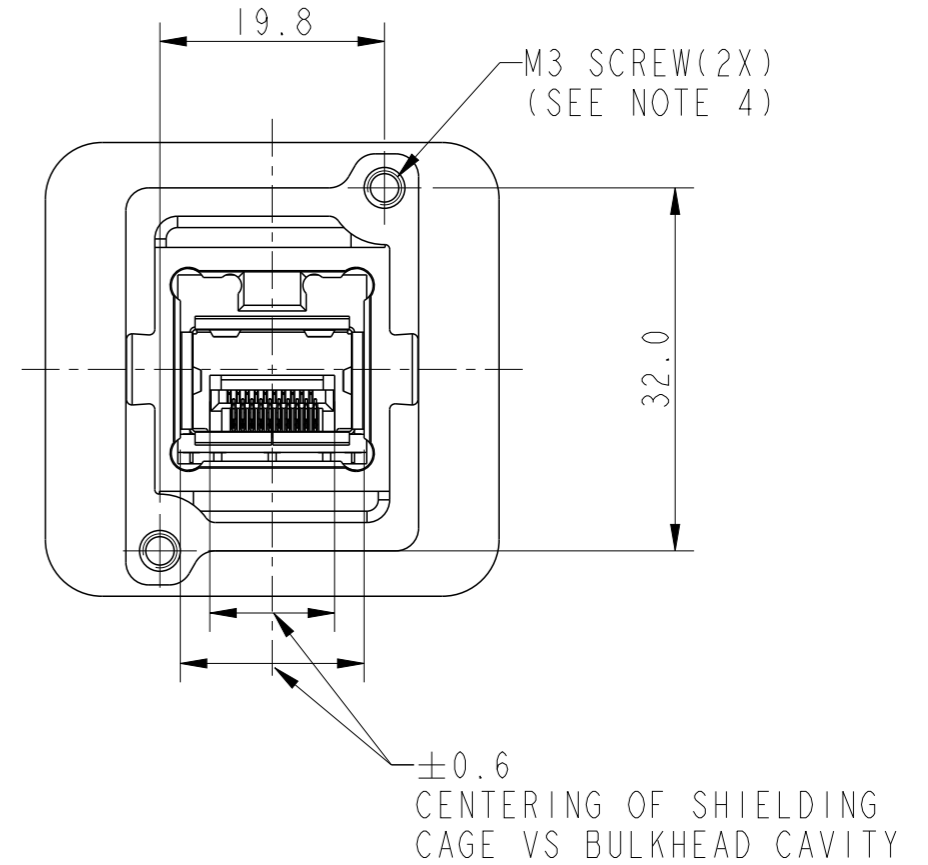
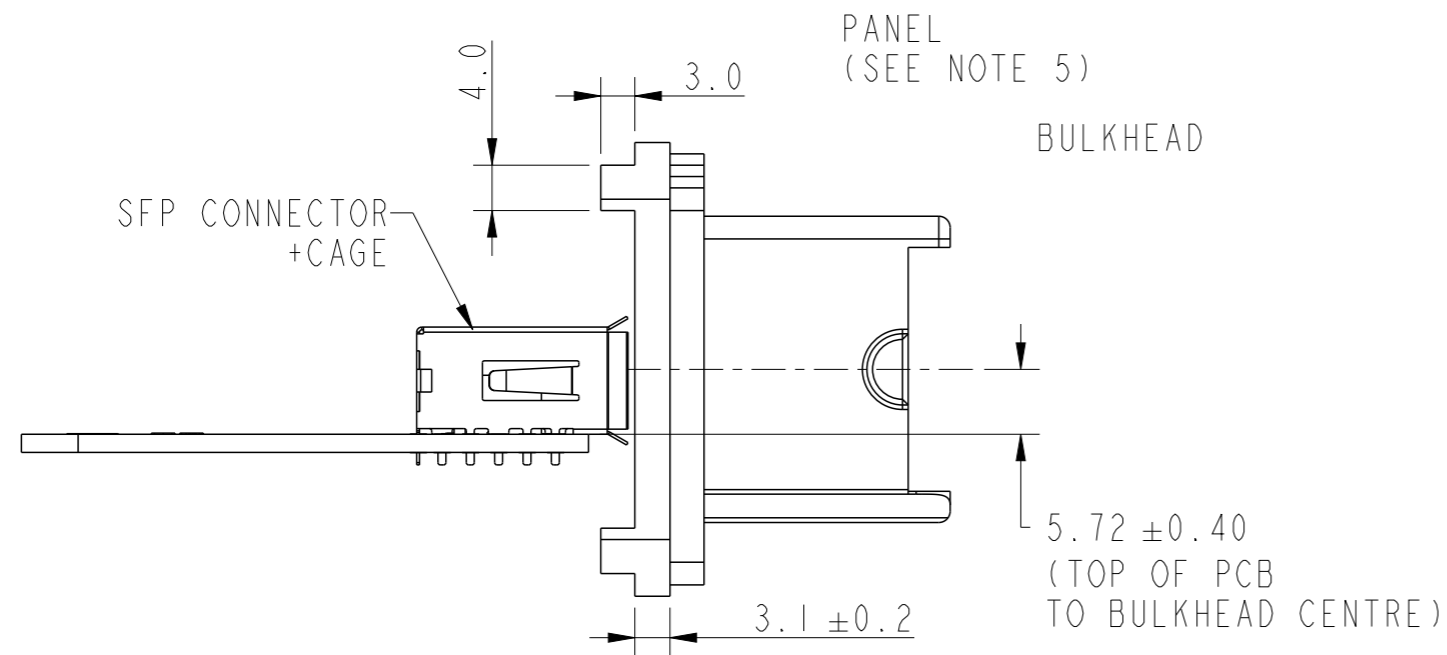


SL NO.	COMPONENT	MATERIAL	REMARKS
1	PLUG CAP	PBT GF	-
2	HOLDER SUBSET KIT	ZAMAK+ STAINLESS STEEL+ SILICONE	PASSIVATED
3	HOUSING SUBSET KIT	PBT GF+IXEF	STANDARD FITTED LEVER
4	SPLIT RUBBER GLAND	SILICONE	SEE PAGE 3
7	TIGHTENING CONE	PA	-
8	GLAND NUT	PBT GF	COLOUR: BLUE

*STANDARD RUBBER GLAND DIA OFFERED IS 6MM
OPTIONAL RUBBER GLAND DIA OF 7MM, 8MM, 9MM, 10MM AND 11.5MM AVAILABLE ON REQUEST

spec ref	dr	Varghese, Bone	2019/06/12	projection	mm	size	A3	scale	3:10
tolerance std	eng	Alosius, Stali	2021/01/08			ecn no	ELX-I-39568-1	rel level	Released
ISO 406 ISO 1101	chr	-	-						
surface	appr	Kuriakose, San	2021/01/08			dwg no	10135746	rev	L
ISO 1302	TOLERANCES UNLESS OTHERWISE SPECIFIED linear: 0.X ±0.3, 0.XX ±0.13, 0.XXX ±0.05 angular: 0° ±2°		cat. no.	-	Product - Customer Drw	sheet 1 of 4			

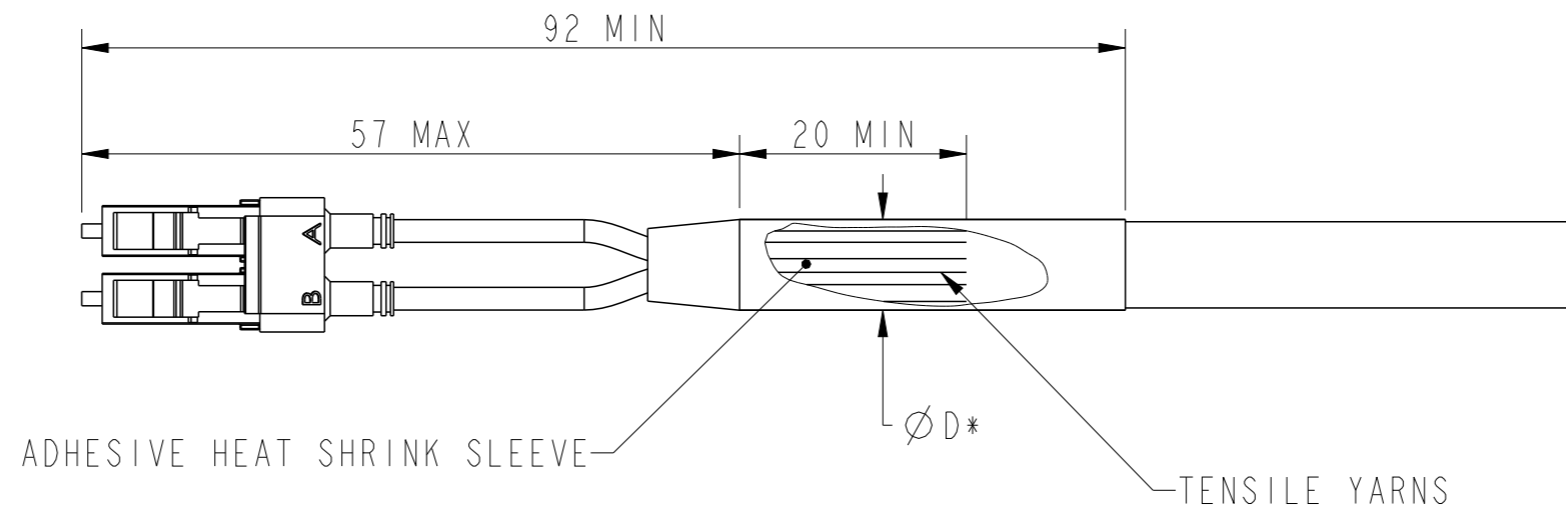
BOARD CONNECTOR WITH BULK HEAD (RECEPTACLE) DETAILS



- NOTES:
- BOARD CONNECTOR SHOWN IS FOR REFERENCE PURPOSE. REFER DRAWING P-UE76-A20-X00XX FOR BOARD CONNECTOR DETAILS
 - REFER DRAWING 10133694 FOR CAGE DETAILS
 - REFER DRAWING 10138458 FOR BULK HEAD (RECEPTACLE) DETAILS
 - SCREWS TO BE USED ARE M3 X 6MM; MATERIAL-STAINLESS STEEL
 - CASTED MOUNTING PANEL SHOULD HAVE ON ITS REAR SIDE AN INTEGRAL RECTANGULAR REINFORCED RIBS OF 3MM THICKNESS AND 4MM WIDTH ALONG THE MOUNTING SCREW PLANE AT THE TOP AND BOTTOM TO ACCOMODATE THE BLIND INTERNAL SCREW THREAD

spec ref		dr	Varghese, Bone	2019/06/12	projection	mm	size	A3	scale	1:1
tolerance std		eng	Alosius, Stali	2021/01/08			ecn no	ELX-I-39568-1	rel level	Released
ISO 406 ISO 1101		chr	-	-						
surface	linear	0.X	±0.3	Amphenol FCI	OCTIS SFP/SFP+ PLUG KIT		dwg no	10135746	rev	L
		0.XX	±0.13		OCTIS PITCH 26 MM					
ISO 1302	angular	0°	±2°		cat. no.	-	Product - Customer Drw	sheet 2 of 4		

FAN-OUT DEFINITION



ØD*	RECOMMENDED GLAND SIZE
From 4.8 min to 5.8 Max	"6"
From 5.8 min to 6.8 Max	"7"
From 6.8 min to 7.8 Max	"8"
From 7.8 min to 8.8 Max	"9"
From 8.8 min to 9.8 Max	"10"
From 10.3 min to 11.3 Max	"11.5"

*CABLE DIAMETER UNDER THE GLAND. IF THE CABLE HAS A SLEEVE, THE DIAMETER OVER THE SLEEVE SHOULD BE CONSIDERED THE TOLERANCE OF ØD SHOULD BE TAKEN INTO ACCOUNT TO MAKE SURE IT IS ALWAYS WITHIN THE SPECIFIED RANGE

spec ref	dr	Varghese, Bone	2019/06/12	projection	mm	size	A3	scale	1:2
tolerance std	eng	Alosius, Stali	2021/01/08			ecn no	ELX-I-39568-1	rel level	Released
ISO 406 ISO 1101	chr	-	-						
surface	appr	Kuriakose, San	2021/01/08	Amphenol FCI		OCTIS SFP/SFP+ PLUG KIT		dwg no 10135746	rev L
ISO 1302	linear	0.X	±0.3	cat. no. -		Product - Customer Drw		sheet 3 of 4	
	angular	0°	±2°						

GENERAL CHARACTERISTICS(*)

MECHANICAL		
MATING ENDURANCE (CYCLES)	EIA 364-09	100
AXIAL TENSILE LOAD (N MIN)	-	150 (**)
VIBRATION	GR 3108	-
RECOM. COUPLING TORQUE (N.CM)	-	200MIN. / 250MAX
WEIGHT (G)	-	60.00
ENVIRONMENTAL		
PROTECTION CLASS (MATED CONDITION)	IEC 60529	IP67(***)
OPERATING TEMPRATURE (°C)	EIA-364-32	-40/+85
STORAGE TEMPRATURE (°C)	EIA-364-32	-40/+85
HUMIDITY (DAMP HEAT) (%RH)	EIA-364-31	80-98% RH
SALT SPRAY	GR-950	720H(***)
ROHS	-	COMPLIANT
FLAMMABILITY	UL94	V0
UVB RESIST	ASTM G154	COMPLIANT
OTHERS:		
EQUIPMENT INTERFACE	-	FOR USE WITH OCTIS PANEL INTERFACE OR RECEPTACLE ****
SFP /SFP+	MSA	FOR USE WITH TRANSCEIVER COMPLYING TO THE SFP/SFP+ STANDARD
CABLE	-	FOR USE WITH STANDARD LC DUPLEX PATCHCORD, MULTIMODE OR SINGLEMODE.*****
PACKAGING		UNITARY IN PLASTIC BAG WITH ASSEMBLY NOTE.

* OCTIS INTERFACE SPECIFICATION-PRODUCT SPECIFICATION - GS-12-1413
 **DEPENDING ON CABLE CHARACTERISTICS
 ***MATED CONDITION
 ****IF THE INTERFACE IS TO BE DIE CASTED INTO THE EQUIPMENT PANEL, PLEASE CONTACT AMPHENOL FOR LICENSE CONDITIONS AND INTERFACE DEFINITION
 *****REFER TO FAN-OUT DIMENSIONAL REQUIREMENT AND RUBBER GLAND SELECTION CHART IN PAGE 3

Amphenol FCI

© 2020 Amphenol Corporation

spec ref	dr	Varghese, Bone	2019/06/12	projection	mm	size	A3	scale	1:2
tolerance std	eng	Alosius, Stali	2021/01/08		← →	ecn no	ELX-I-39568-1	rel level	Released
ISO 406 ISO 1101	chr	-	-						
	appr	Kuriakose, San	2021/01/08	product family	-				
surface	linear	0.X	±0.3	Amphenol FCI	OCTIS SFP/SFP+ PLUG KIT	dwg no	10135746	rev	L
		0.XX	±0.13						
		0.XXX	±0.05						
ISO 1302	angular	0°	±2°	cat. no.	-	Product - Customer Drw	sheet 4 of 4		