

Description
 Flat Roof Mount kits, 1.74inch Dia x 60inchL Tube

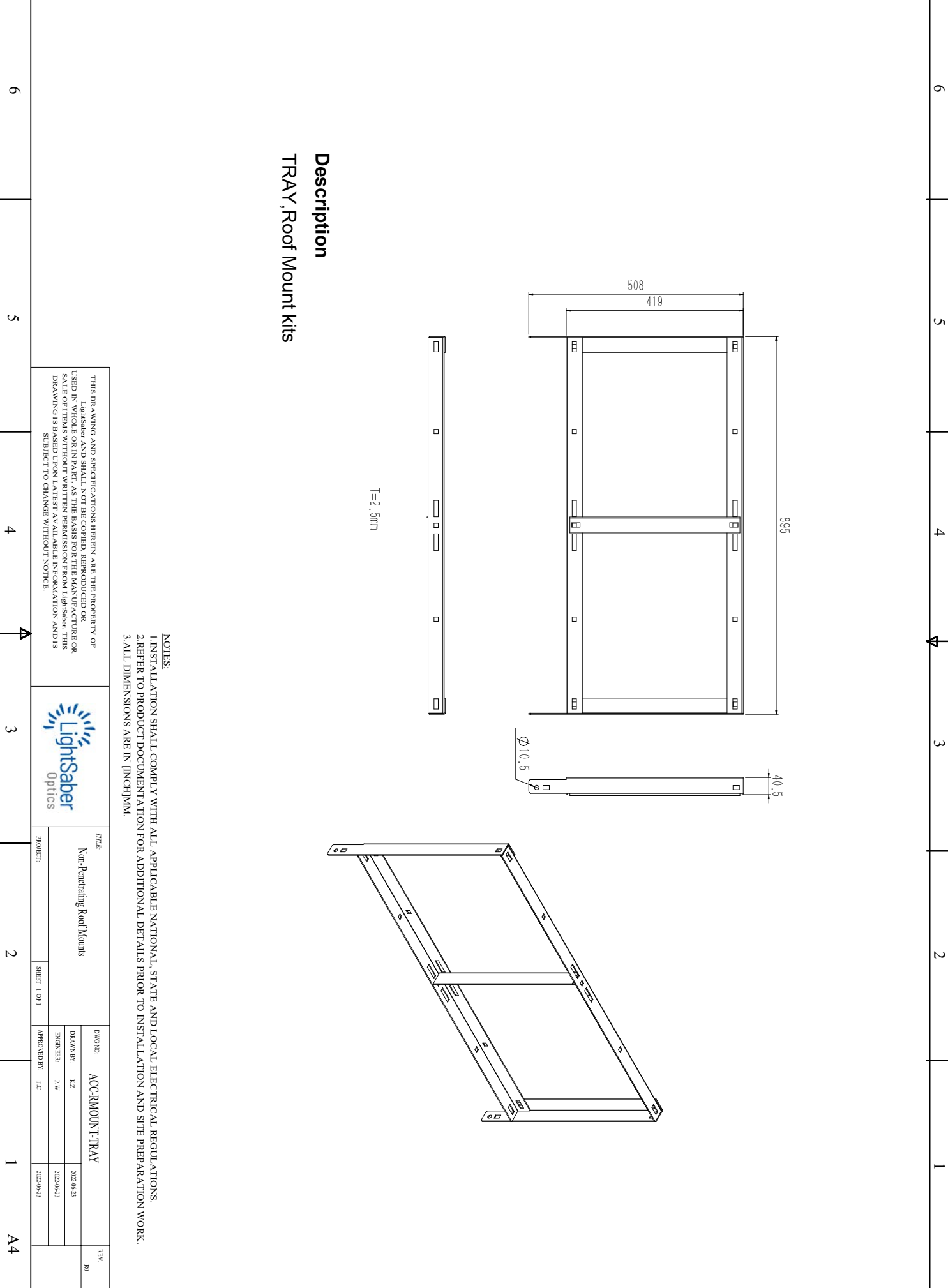
- NOTES:**
1. INSTALLATION SHALL COMPLY WITH ALL APPLICABLE NATIONAL, STATE AND LOCAL ELECTRICAL REGULATIONS.
 2. REFER TO PRODUCT DOCUMENTATION FOR ADDITIONAL DETAILS PRIOR TO INSTALLATION AND SITE PREPARATION WORK.
 3. ALL DIMENSIONS ARE IN [INCH]MM.

THIS DRAWING AND SPECIFICATIONS HEREIN ARE THE PROPERTY OF
 LIGHTSABER AND SHALL NOT BE COPIED, REPRODUCED OR
 USED IN WHOLE OR IN PART, AS THE BASIS FOR THE MANUFACTURE OR
 SALE OF ITEMS WITHOUT WRITTEN PERMISSION FROM LIGHTSABER. THIS
 DRAWING IS BASED UPON LATEST AVAILABLE INFORMATION AND IS
 SUBJECT TO CHANGE WITHOUT NOTICE.



| | | | | | |
|-----------------------------|--|-------------------|--|------------|--|
| TITLE | | DRAWING NO. | | REV. | |
| Non-Penetrating Roof Mounts | | ACC-RMOUNT-NONPEN | | 80 | |
| PRODUCT: | | DRAWN BY: KZ | | 2023-06-23 | |
| SHEET 1 OF 1 | | ENGINEER: JMW | | 2023-06-23 | |
| | | APPROVED BY: TC | | 2023-06-23 | |

6 5 4 3 2 1



Description
TRAY, Roof Mount Kits

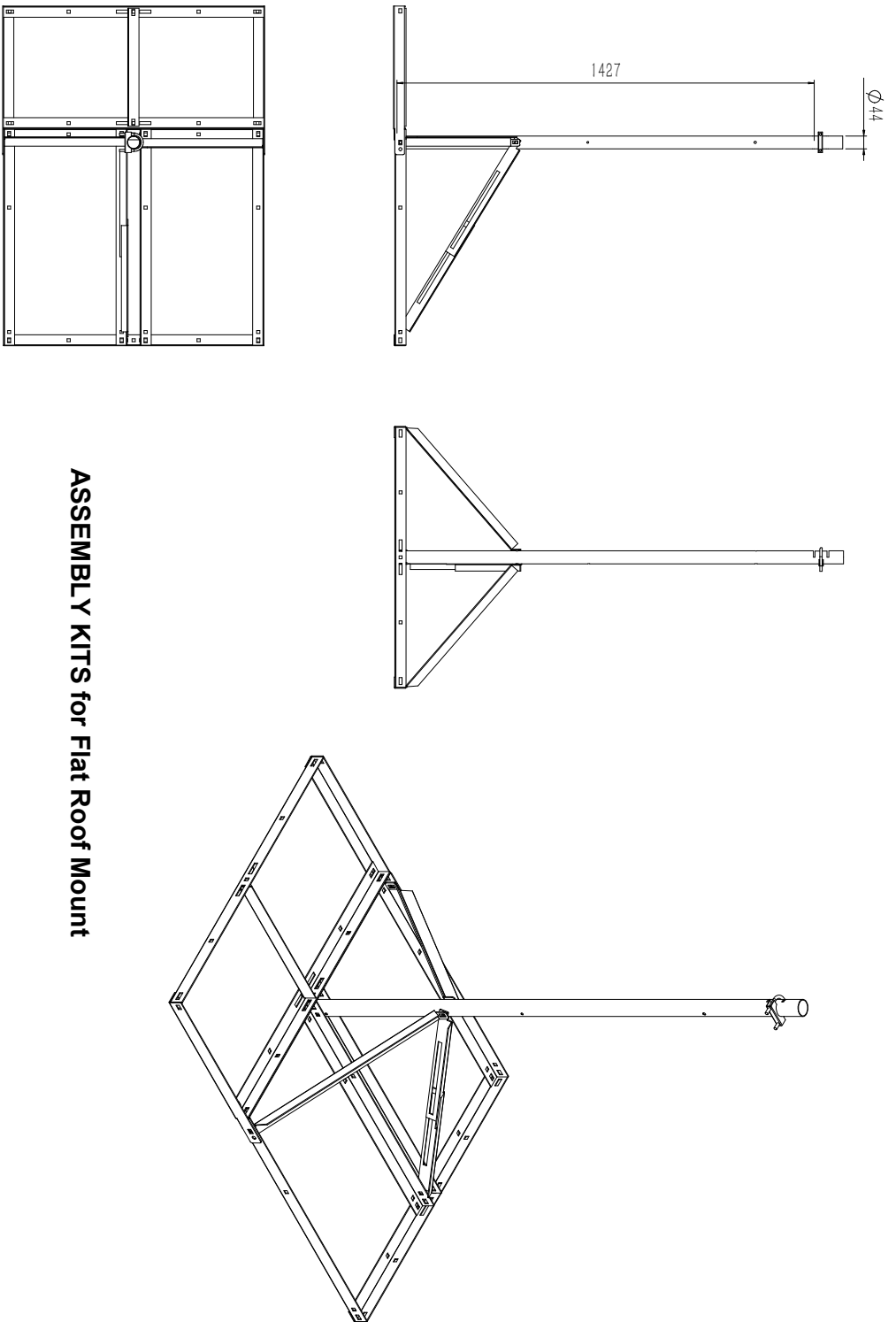
- NOTES:**
 1. INSTALLATION SHALL COMPLY WITH ALL APPLICABLE NATIONAL, STATE AND LOCAL ELECTRICAL REGULATIONS.
 2. REFER TO PRODUCT DOCUMENTATION FOR ADDITIONAL DETAILS PRIOR TO INSTALLATION AND SITE PREPARATION WORK.
 3. ALL DIMENSIONS ARE IN [INCH]MM.

THIS DRAWING AND SPECIFICATIONS HEREIN ARE THE PROPERTY OF
 LightSaber AND SHALL NOT BE COPIED, REPRODUCED OR
 USED IN WHOLE OR IN PART, AS THE BASIS FOR THE MANUFACTURE OR
 SALE OF ITEMS WITHOUT WRITTEN PERMISSION FROM LightSaber. THIS
 DRAWING IS BASED UPON LATEST AVAILABLE INFORMATION AND IS
 SUBJECT TO CHANGE WITHOUT NOTICE.



| | | | | |
|--------------------------------------|--------------|--------------------------|------------|------------|
| TITLE Non-Penetrating Roof Mounts | | DWG NO.: ACC-RMOUNT-TRAY | | REV. 00 |
| PRODUCT: | SHEET 1 OF 1 | DRAWN BY: KZ | 2023-06-23 | |
| | | ENGINEER: FW | 2023-06-23 | |
| | | APPROVED BY: T.C | 2023-06-23 | |

6 5 4 3 2 1 A4



ASSEMBLY KITS for Flat Roof Mount

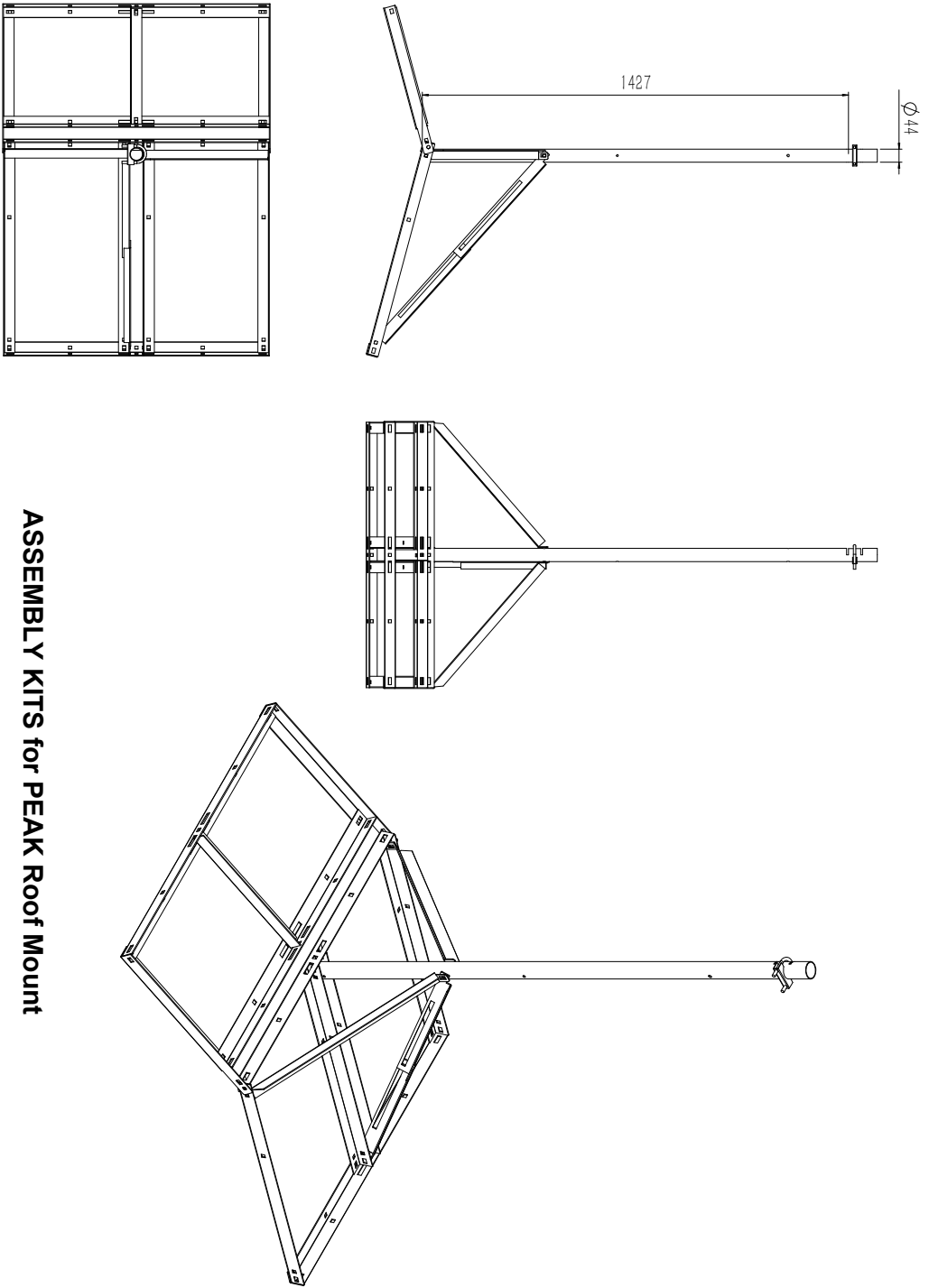
- NOTES:**
 1. INSTALLATION SHALL COMPLY WITH ALL APPLICABLE NATIONAL, STATE AND LOCAL ELECTRICAL REGULATIONS.
 2. REFER TO PRODUCT DOCUMENTATION FOR ADDITIONAL DETAILS PRIOR TO INSTALLATION AND SITE PREPARATION WORK.
 3. ALL DIMENSIONS ARE IN [INCH]MM.

THIS DRAWING AND SPECIFICATIONS HEREIN ARE THE PROPERTY OF
 LightSaber AND SHALL NOT BE COPIED, REPRODUCED OR
 USED IN WHOLE OR IN PART, AS THE BASIS FOR THE MANUFACTURE OR
 SALE OF ITEMS WITHOUT WRITTEN PERMISSION FROM LightSaber. THIS
 DRAWING IS BASED UPON LATEST AVAILABLE INFORMATION AND IS
 SUBJECT TO CHANGE WITHOUT NOTICE.



| | | | | |
|-----------------------------|--------------|-------------------|-----|------------|
| TITLE | | ACC-RMOUNT-NONPEN | | REV |
| Non-Penetrating Roof Mounts | | ACC-RMOUNT-TRAY | | 80 |
| PROJECT: | SHEET 1 OF 1 | DRAWN BY: | KZ | 2023-06-23 |
| | | ENGINEER: | FW | 2023-06-23 |
| | | APPROVED BY: | T.C | 2023-06-23 |

6 5 4 3 2 1 A4



ASSEMBLY KITS for PEAK Roof Mount

- NOTES:**
1. INSTALLATION SHALL COMPLY WITH ALL APPLICABLE NATIONAL, STATE AND LOCAL ELECTRICAL REGULATIONS.
 2. REFER TO PRODUCT DOCUMENTATION FOR ADDITIONAL DETAILS PRIOR TO INSTALLATION AND SITE PREPARATION WORK.
 3. ALL DIMENSIONS ARE IN [INCH]MM.

THIS DRAWING AND SPECIFICATIONS HEREIN ARE THE PROPERTY OF LightSaber AND SHALL NOT BE COPIED, REPRODUCED OR USED IN WHOLE OR IN PART, AS THE BASIS FOR THE MANUFACTURE OR SALE OF ITEMS WITHOUT WRITTEN PERMISSION FROM LightSaber. THIS DRAWING IS BASED UPON LATEST AVAILABLE INFORMATION AND IS SUBJECT TO CHANGE WITHOUT NOTICE.



| | | | | | |
|-----------------------------|--|-------------------|--|------------|----|
| TITLE | | ACC-RMOUNT-NONPEN | | REV | 80 |
| Non-Penetrating Roof Mounts | | DRAWN BY: KZ | | 2023-06-23 | |
| PRODUCT: | | ENGINEER: JMW | | 2023-06-23 | |
| SHEET 1 OF 1 | | APPROVED BY: T.C | | 2023-06-23 | |